



UK INTERMODAL SOLUTIONS YOUR DOOR-TO-DOOR TRANSPORTATION PARTNER





THE JOURNEY IS ONLY JUST BEGINNING

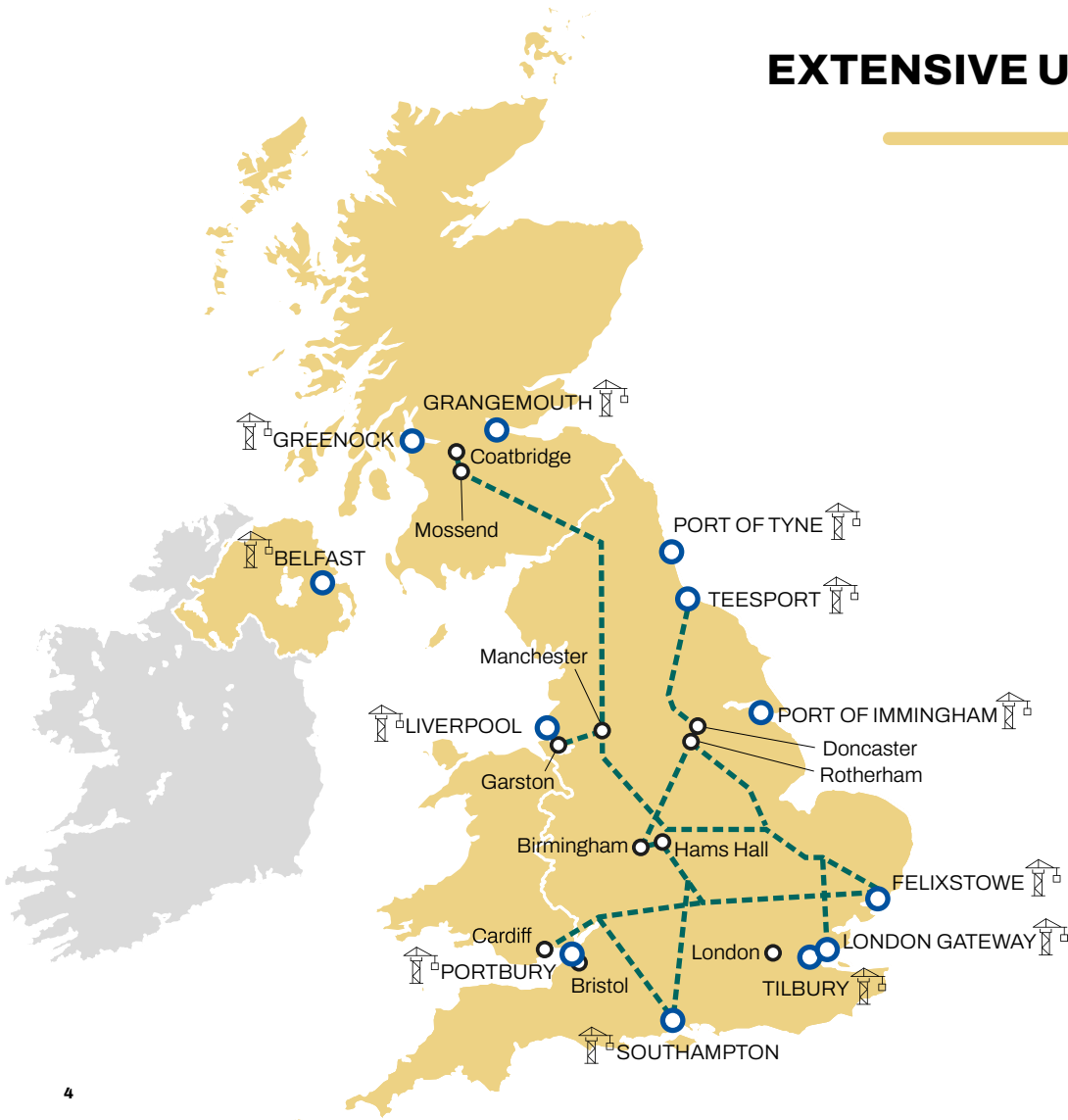
Transporting your cargo across the ocean could be just the beginning of your journey with MSC. We offer the largest UK Intermodal fleet of any shipping line and can look after the door-to-door delivery of your cargo in an efficient and cost-effective way.

We know how important reliability is to our customers. When you choose MSC for inland transportation, you'll benefit from market leading fleet capacity across road and rail, providing increased flexibility and reliability whilst decreasing your supply chain risk and carbon footprint.

Customer service is at the heart of our seamless delivery and collection solution. That's why our friendly, award-winning local team of experts will be on hand to help provide the very best solutions for your cargo.



EXTENSIVE UK COVERAGE



850+
NATIONAL
UK TEAM



7
CONTRACT
TRAINS



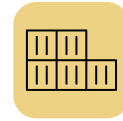
9
UK RAIL
TERMINALS



11
PORTS



600+
TRUCKS



11
DEPOTS
NATIONWIDE

Note: key numbers estimated as of December 2023

uk-intermodalenquiries@msc.com
Call: +44 (0)1473 277777

MARKET LEADING CONNECTIVITY



UK'S LARGEST INTERMODAL OFFERING

Utilising the UK's largest intermodal offering of any shipping line, our national connectivity links 11 ports and 9 terminals across the UK.



MOVING YOUR CARGO CLOSER

Our extensive rail network saves over 34 million road miles annually by moving your cargo closer to its final destination.



WIDESPREAD CAPACITY

Dependable resource across the country, provides peak season peace of mind, all year round.



EXPERT KNOWLEDGE

IN-HOUSE PARTNERSHIPS

Excellent relationships with top Intermodal partners based in-house at our UK headquarters in Ipswich, create a direct communication channel for prompt responses to evolving market conditions.



AWARD WINNING EXPERTISE

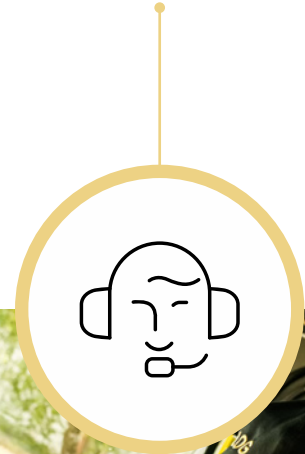
With an 850+ national dedicated team, we're committed to delivering customer excellence and finding the best solution for your cargo.

Our UK-based team of experts are on hand to help you each and every step of the way.

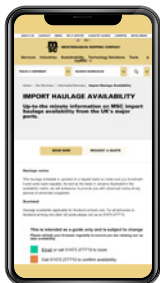


KEEPING YOU UPDATED

Our Transport Support Team is committed to providing the personalised service your business needs whilst keeping you informed on the day about your cargo.



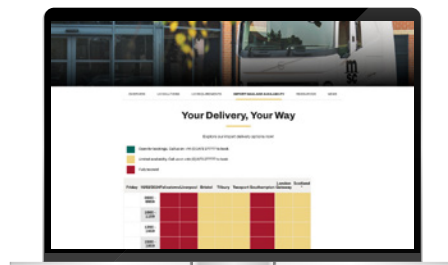
SUPPLY CHAIN CONFIDENCE



24/7 ONLINE ACCESS

Giving you access to:

- Competitive rates
- Accurate haulage availability
- Real-time tracking of your container
- Booking visibility
- For further information please visit intermodal.mscuk.com/register



TAILOR-MADE SOLUTIONS

- We provide specialist equipment and solutions including including side-loaders, tipper trailers, breakbulk, out of gauge, reefer (refrigerated), liquid cargo and commodities.
- Bespoke drop & swap and stand trailer operations
- Supply chain confidence and seamless integration
- Complemented by storage options to keep your supply chain safe and secure
- Check import haulage availability [here](#)

START YOUR JOURNEY TODAY AND TALK TO YOUR LOCAL MSC REPRESENTATIVE

uk-intermodalenquiries@msc.com

Call: +44 (0)1473 277777





MOVING THE WORLD, TOGETHER.



[msc.com/intermodal](https://www.msc.com/intermodal)

General enquiries: uk-intermodalenquiries@msc.com

Call: **+44 (0)1473 277777**

Follow us on:

