



**REEFER  
CARGO  
SOLUTIONS  
FRUIT**





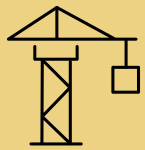
# 730

VESSELS



# 260+

ROUTES



# 520

PORTS OF CALL



# 23

MILLION TEU CARRIED ANNUALLY



# 155

COUNTRIES



# 675

OFFICES



# 150,000

MSC GROUP EMPLOYEES



## YOUR FRUIT IS OUR FOCUS

Passion is what keeps MSC moving ahead when crossing oceans, or reaching far away corners of the globe. Innovation drives the way we develop technology to transport goods faster, more efficiently and in a more sustainable manner. Our growing fleet, modern equipment and dedicated teams, demonstrate the commitment of MSC towards our customers. We are a family company, founded by Captain Gianluigi Aponte, and our focus remains true to our roots, building and retaining long-term trusted partnerships with customers of all size and scale. We care for our people, our customers and their cargo.

Note: key numbers estimated for 2022



# MSC SUSTAINABILITY ENGAGEMENT

## OUR PURPOSE

We connect the world, fostering inclusive social prosperity and economic growth, whilst respecting and nurturing the home we all share - our blue planet.

## ENABLING SUSTAINABLE SUPPLY CHAINS

MSC's strong core values are reflected by our long term commitment to sustainable development. We are ambitious and take pride in delivering on our commitments, collaborating with our partners to create shared value and to ensure sustainable supply chains. At MSC, we regard sustainability as a strategic imperative and, above all, a business priority. As an active participant of the United Nations Global Compact our ambition goes above and beyond compliance as we integrate sustainability in all aspects of our day-to-day operations.

## OUR SUSTAINABILITY ROADMAP

MSC's sustainability roadmap is fully aligned with the SDGs and the UN Global Compact's Ten Principles, creating value throughout our global operations. By intensifying our efforts to address climate challenges, MSC is **enabling logistics decarbonisation** by working towards carbon neutrality, supporting logistics transitional solutions as well as maintaining our ongoing focus on energy efficiency. We connect the world, **fostering inclusive trade** by securing organic growth and generating value among the local economies and societies that we serve. **Addressing social challenges** is at the heart of MSC business, as we maintain our unwavering focus on people and on related social issues around human rights, diversity and inclusion.



## OUR EXPERTS ONLY HAVE EYES FOR YOUR FRUIT

OVER  
**1,000**



REEFER  
SPECIALISTS

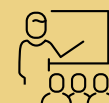


DEDICATED  
CUSTOMER  
SERVICE

- Solid experience on reefer transportation & market requirements
- Guidance for the preparation of containers to food-grade specifications
- Pre-Trip Inspection
- Cargo monitoring



AVAILABLE  
**24/7**



CONTINUOUSLY  
TRAINED

at the MSC Reefer Academy providing courses on the latest standards and technologies



## WE NEVER LET YOUR FRUIT OUT OF SIGHT



### INTERMODAL SOLUTIONS

ROAD, RAIL AND BARGE



### COLD STORAGE WAREHOUSES



### HIGHLY STANDARDISED CONTROL PROCEDURES



#### VENT SETTINGS

to allow the intake of external air and reduce ethylene and carbon dioxide buildups. Ethylene accelerates the ripening process and carbon dioxide causes discolouration



#### DEHUMIDIFICATION

to avoid fungi, mould and dehydration



#### CONTROLLED ATMOSPHERE

to ensure the fruit matures as required, guaranteeing a longer shelf life, by setting the right mix of oxygen, nitrogen and carbon dioxide



#### COLD TREATMENT

to avoid the spreading of pests by monitoring the temperature through three USDA sensors placed in the core of the fruit



**THANKS TO OUR TECHNOLOGY,  
YOUR FRUIT IS UNDER WATCH  
AT ALL TIMES**

WORLD  
LEADING  
REEFER  
FLEET

AVERAGE  
CONTAINER  
AGE UNDER **7 YEARS**

OVER  
**2.0**  
MILLION TEU  
REEFERS  
SHIPPED IN 2021

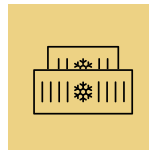
MSC REEFERS EQUIPPED  
WITH THE LATEST  
TECHNOLOGY

PRIMELINE®  
and NaturaLINE®  
most efficient  
& environmental-friendly  
container refrigeration units

SMART CONTAINER  
SOLUTIONS  
developing solutions  
to help monitor  
the position  
and the conditions  
of your cargo

GENSET  
diesel  
generators  
for overland  
transit

STARCOOL CA®  
and XTENDFRESH®  
technologies for better  
Controlled Atmosphere (CA)  
LIVENTUS®, MAXTEND®,  
PURFRESH® also available



CONTAINER AVAILABILITY  
WORLDWIDE

20' Reefer, 40' High Cube Reefer



## ALL EYES ON YOUR FRUIT, ACROSS THE GLOBE



THE FRUIT SECTOR  
RELIES ON MSC



TO TRANSPORT

**ALL**  
FRUIT  
VARIETIES



FROM  
**90**



MAJOR EXPORT  
COUNTRIES

TO  
**120**



MAJOR IMPORT  
COUNTRIES



**MOVING THE WORLD, TOGETHER.**

**[msc.com/fruit](https://www.msc.com/fruit)**