



INTRODUCTION TO
MSC IN IVORY COAST



TABLE OF CONTENTS



4 A FAMILY COMPANY

10 MSC IN IVORY COAST

6 ENABLING SUSTAINABLE
SUPPLY CHAINS

18 CONTACT DETAILS

8 MSC FOUNDATION



A FAMILY COMPANY

Founded by Captain Gianluigi Aponte, MSC Mediterranean Shipping Company (MSC) is a privately owned shipping line founded in 1970 and headquartered in Geneva (Switzerland) since 1978. The Company's international headquarters supervise a worldwide network of offices with each having responsibility for commercial and operational activities in their respective countries. MSC is a world leader in global transportation and is part of the MSC Group shipping conglomerate, a global business engaged in the transport and logistics sector. The Group encompasses a Cargo Division with MSC Mediterranean Shipping Company (MSC), Terminal Investment Limited (TiL), MEDLOG, MedTug and a Passenger Division led by MSC Cruises and complemented by Mediterranean passenger ferries with Grandi Navi Veloci (GNV) and SNAV. Despite our global presence and large scale operations, MSC is, above all, a family company, sharing a common heritage and strong values.

KEY FIGURES

760	vessels
300	routes
520	ports of call
22.5M	TEU carried annually
155	countries
675	offices
180K	MSC Group employees

Note: key numbers estimated July 2023

MSC GROUP VALUES

Our values shape our culture and define the character of our Company. They guide how we behave and make decisions, they influence recruitment of employees, and they are fundamental to our operations.



We are a **Family Company**

The commitment of the founding Family inspires us with dedication and trust, increasing our sense of belonging. Sharing the family's entrepreneurial spirit leads us to act proactively, courageously, and responsibly, in the best interest of our customers and our Company.



We have **Passion**

We are passionate about what we do, we challenge ourselves to achieve excellence, and we are tenacious in overcoming obstacles. Working together with passion and enthusiasm, we provide a unique experience for our customers.



Capt. Gianluigi Aponte
Group Chairman



Diego Aponte
Group President



Alexa Aponte Vago
Group Chief Financial Officer



We are in
**Continuous
Evolution**

Our tradition, expertise, professionalism, and ambition drive the Company's fast and sustainable growth.

We strive for the most innovative solutions to embrace change, always respecting safety and the environment.



We
**Care for
People**

We believe that each person brings unique value.

We develop authentic relationships built on ethics, respect, and team spirit.

We truly care about the satisfaction and loyalty of our customers and employees.



We believe in
**Equal
Opportunities**

Our mission is to provide our people with personal fulfillment and enrichment.

We are committed to sharing our knowledge, delivering training, and support enabling our people's professional growth. We ensure fair opportunities providing long-term career development, embracing diversity and valuing all cultures.

ENABLING SUSTAINABLE SUPPLY CHAINS

[msc.com/sustainability](https://www.msc.com/sustainability)

MSC's strong core values and long-term view drive our commitment to creating a sustainable future. We take pride in acting responsibly and collaborating with our stakeholders in search of solutions to address the global challenges of today and the emerging trends that will impact our business in the years and decades to come.

Our unique approach to sustainability embraces and embeds the United Nations Sustainable Development Goals (SDGs) across our business and is reflected in everything we do. As a growing global company in shipping and logistics, we seek to contribute to building resilient and inclusive supply chains and believe that operating sustainably benefits our colleagues and crew, our customers and the communities in which we operate.

We are committed to advancing our industry's decarbonization journey, catalyzing economic growth by supporting local businesses in their participation in the global trade system, while ensuring the respect of human rights across the whole value chain.

CREATING VALUE BY CONNECTING THE WORLD

At MSC, we have a clear purpose that we bring to life through the delivery of our Sustainability Roadmap which sets out our three sustainability priorities, and is aligned with the SDGs and the UN Global Compact's Ten Principles.

With our operations in 155 countries – including more than 40 countries across the African continent – we have a key role to play in accelerating the energy transition and are committed to our decarbonization pathway towards the target of net zero by 2050. We are **enabling logistics decarbonization** by aiming for carbon neutrality; supporting logistics transition solutions; and maintaining a focus on energy efficiency.

The global economy relies on transport and logistics to enable trade, generating growth and social prosperity. MSC is in a unique position to create value by connecting local communities, facilitating access to a global market and supporting customers through resilient and disruption-free supply chains. We are **fostering inclusive trade** by contributing to economic growth; building resilience across the global value chain; and developing local capacity and know-how.



We live in an interconnected world where the business of global companies connects and brings prosperity to people and societies. Advancing human rights and ensuring a just transition to a zero-carbon economy are at the heart of MSC's business. Our social impact extends beyond our diverse workforce and includes our business partners with whom we work to build a sustainable supply network. We are **addressing social challenges** by advancing human rights; promoting diversity, equity and inclusion; and engaging our supply chain.

UNLOCKING POTENTIAL ACROSS THE AFRICAN CONTINENT

Every week, MSC's vessels connect Africa to the rest of the world. In addition, our people are working in terminals, trucking, depots and warehouses across the continent, with an additional 21,000 Africa Global Logistics (AGL) employees joining the MSC family following the acquisition of Bolloré Africa Logistics.

MSC transports a range of commodities – key contributors to national and regional GDP such as coffee, cocoa, tea and cotton – connecting African farmers and small enterprises to markets around the world. Our support for the Ghanaian cocoa trade has been recognized by the

Ghana Cocoa Board's Shipping Line of the Year award. We recognize our enabling role to support access to essential goods for communities and secure humanitarian supply chains across the African continent.

At MSC we believe we have a role to play in building more inclusive societies, fostering economic growth, transferring technical knowledge and empowering tomorrow's workforce with the skills needed to navigate the energy transition and overcome supply chain disruptions. In South Africa, we have conducted a leadership programme for upskilling disadvantaged young people, providing qualifications in international trade, clearing and freight forwarding and shipping and employing many graduates of the programme.

For communities impacted by instability, MSC contributes to their economic development by boosting employment and enhancing the business capacity of local enterprises. In Mozambique, we have been working in close collaboration with government, academia and other local partners to support capacity development in transport and logistics to a former competitor, as well as providing employment and training opportunities as part of preparing our future talent pipeline for MSC offices, warehouses and depots across the country.

OUR PURPOSE

We connect the world, fostering inclusive social prosperity and economic growth, whilst respecting and nurturing the home we all share, our blue planet.



MSC FOUNDATION

mscfoundation.org

Over the years, the MSC Group has expressed its values in substantial long-term partnerships that actively engage in achieving meaningful change. The MSC Foundation was established as a private non-profit entity in 2018 to lead, focus, and advance these commitments. The Foundation supports, designs and implements interventions focused on the environment and marine environment, social and health care, applied research and education, support for the most vulnerable populations and prompt emergency response initiatives in crisis and disaster situations. It also contributes to guiding and complementing the MSC Group's commitment to constant development and the sustainability of its business.

OUR VISION

“To restore the critical balance between people and nature within a generation.”

Working with a long-term perspective and engaging the MSC Group's international network, the MSC Foundation partners with international bodies with established reputations and proven expertise, public and private bodies, and government and non-governmental organisations. These partnerships strive to generate measurable and sustainable social change through programmes conceived to conserve the “blue planet” (seas, rivers, and biodiversity) and to support the most disadvantaged and vulnerable communities, in particular those with links to the maritime economy.

OUR MISSION

“To utilize MSC's global reach and unique knowledge of the sea to take immediate action that contributes to protecting and nurturing the blue planet and all its people.”

Our ship logo speaks for the entire MSC Group as Masters of the Sea, while encapsulating the MSC Foundation's vision and mission in a unique origami paper boat design that conveys the fragility of the oceans and our focus on children as the future.

OUR FOCUS AREAS



ENVIRONMENTAL
CONSERVATION



COMMUNITY
SUPPORT



EDUCATION



EMERGENCY
RELIEF

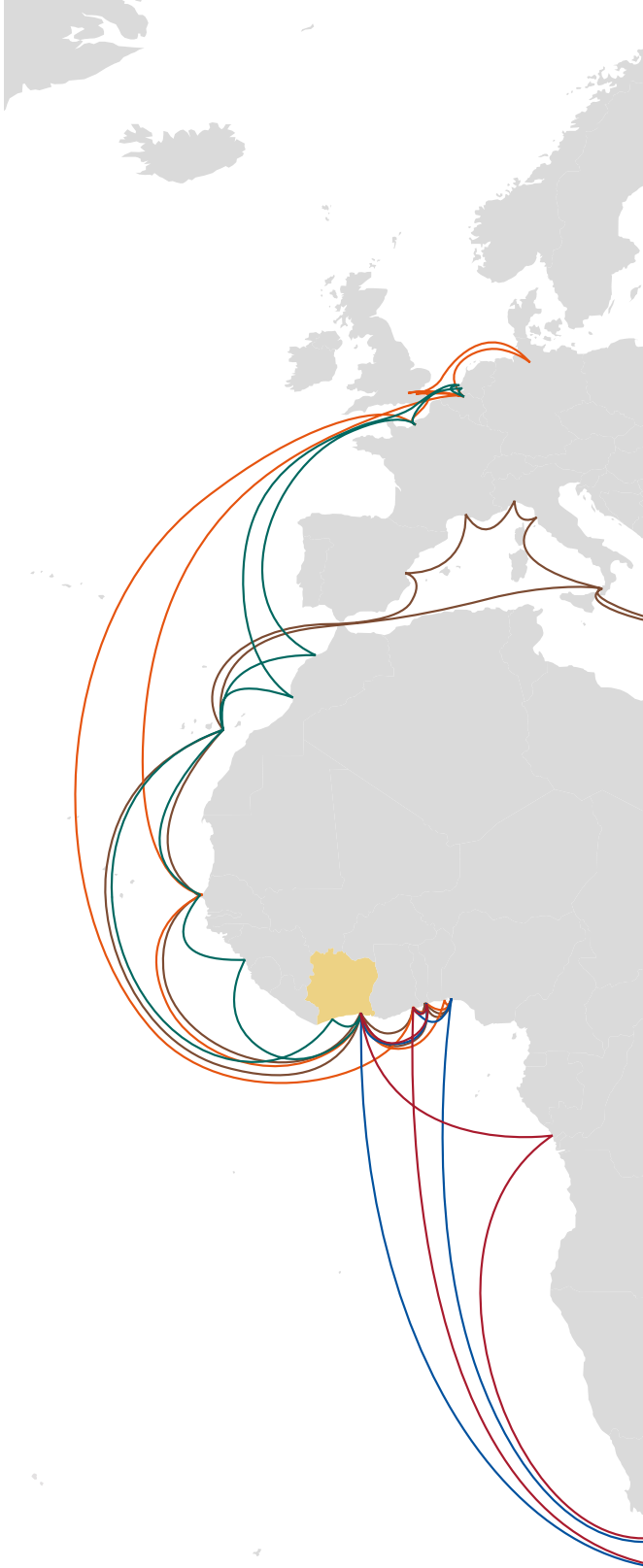
“The MSC Foundation is motivated by a deep sense of responsibility for the planet and its resources, particularly the seas and oceans, aware that we all have a duty to leave a better world for our future generations.”

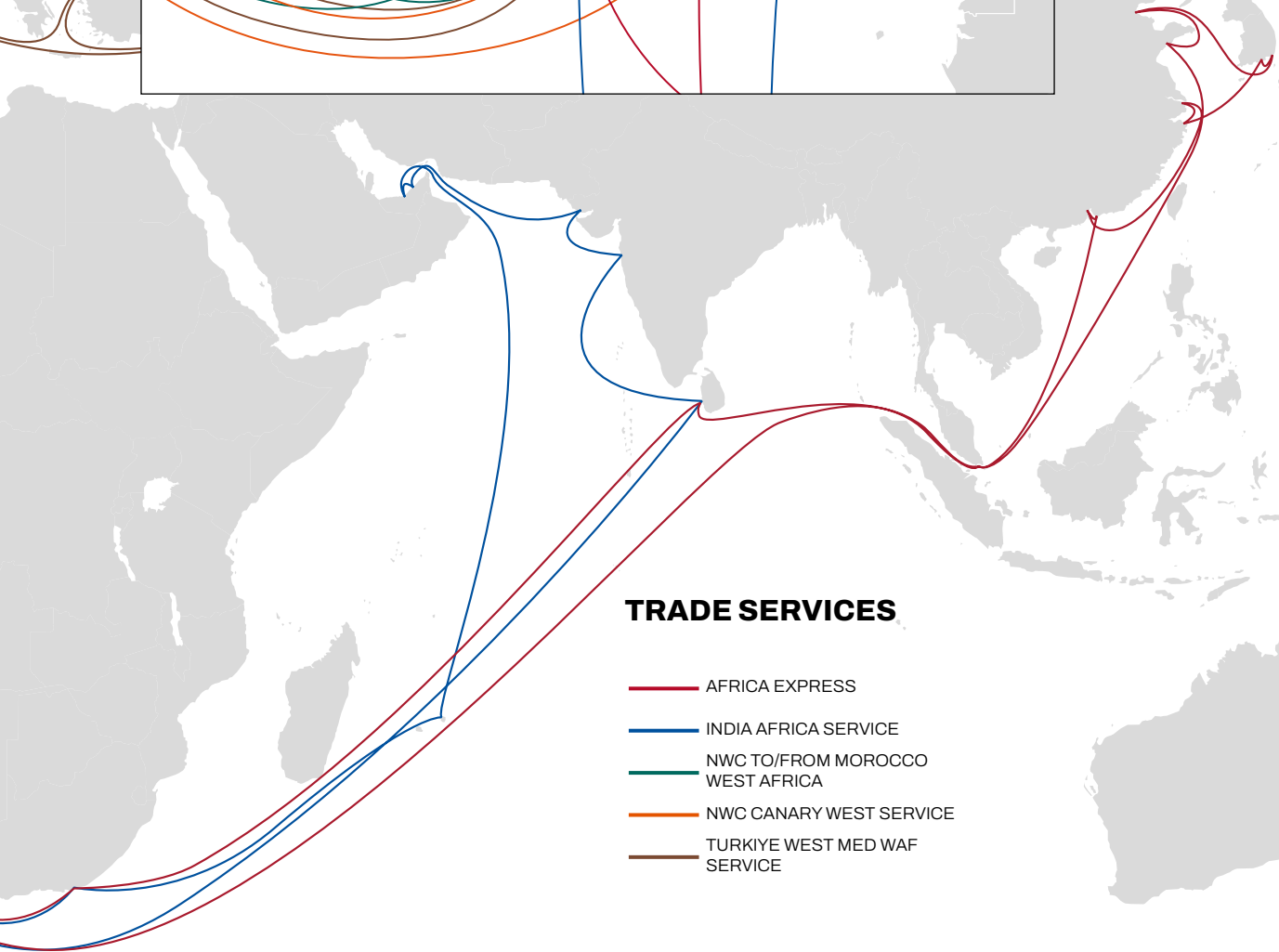
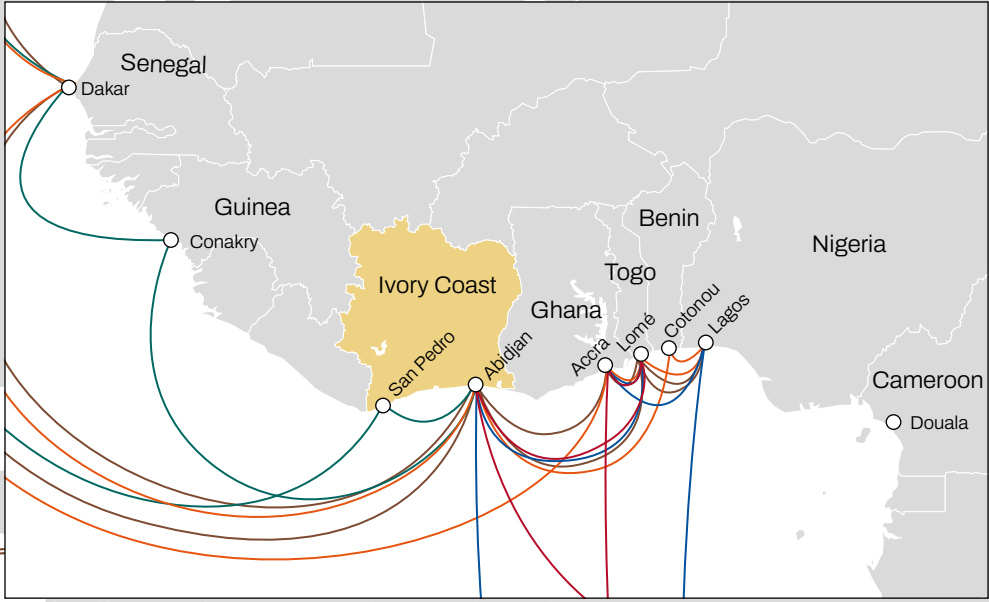
Capt. Gianluigi Aponte

MSC IN IVORY COAST

MSC Mediterranean Shipping Company has developed a strong presence in Ivory Coast since 2002. The company has 2 offices in Abidjan and San-Pedro.

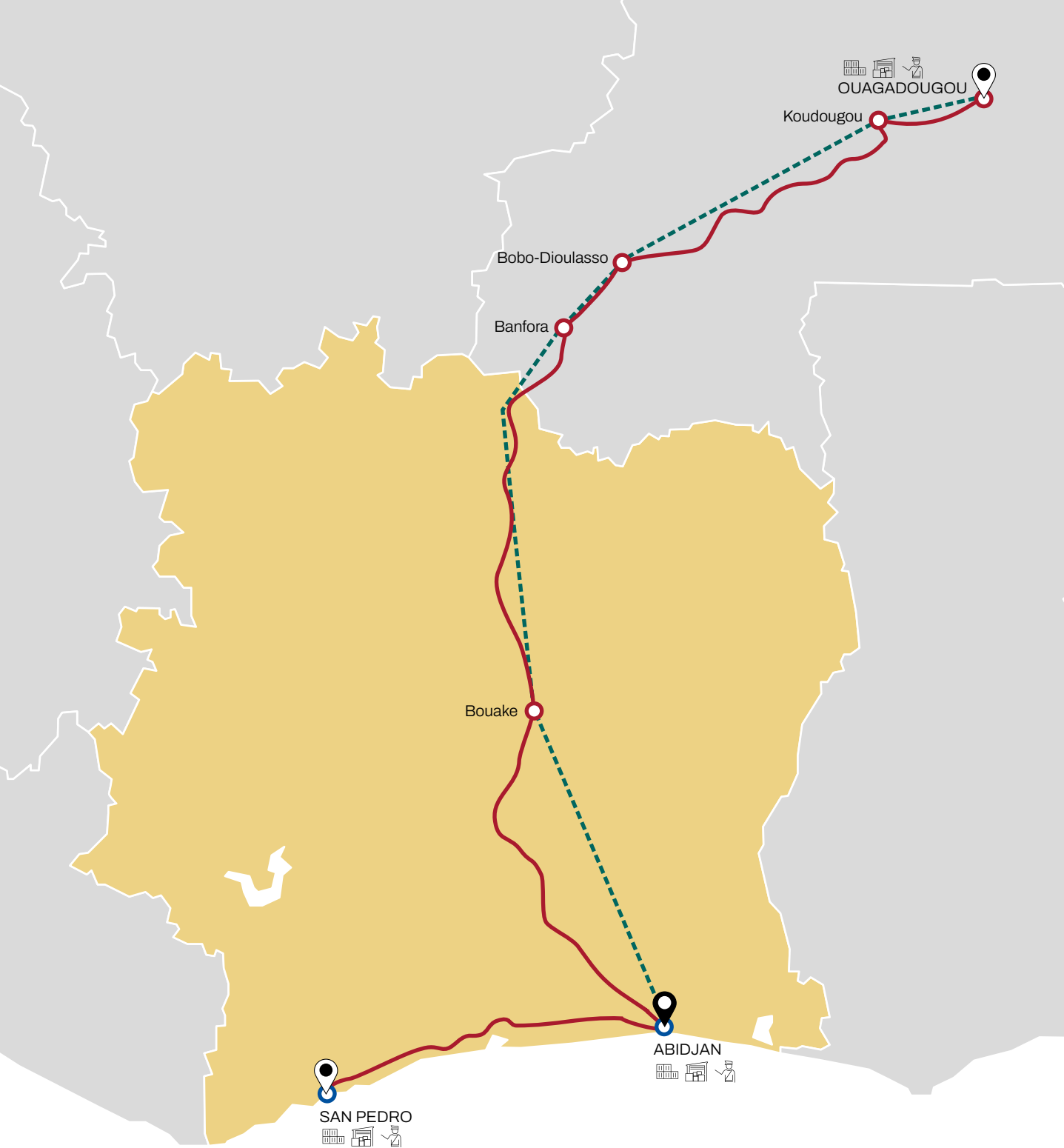
Our objective is to provide complete logistics solutions and preserve the condition of your cargo from the moment it is loaded until its final destination. Our ability to be close to our customers, to react swiftly to their enquiries and needs are the key elements to our success and the reason why MSC has become a leading carrier in Ivory Coast.

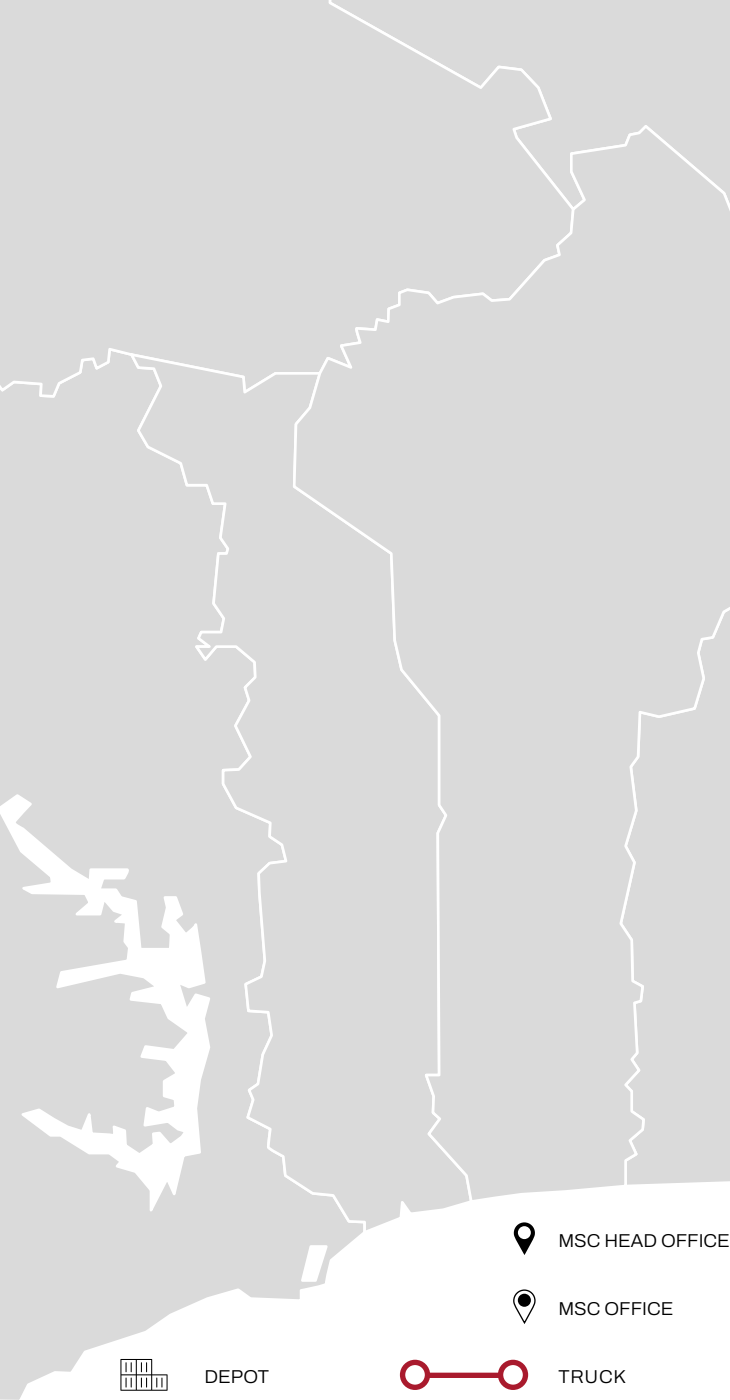




TRADE SERVICES

- AFRICA EXPRESS
- INDIA AFRICA SERVICE
- NWC TO/FROM MOROCCO WEST AFRICA
- NWC CANARY WEST SERVICE
- TURKIYE WEST MED WAF SERVICE





DOOR-TO-DOOR SOLUTIONS

Over the years, MSC has made strategic investments into cargo-related businesses including ports, crewing, trucking, rail and ship management. We have acquired a strong knowledge of the local markets and invested in an infrastructure of trucks, trains and depots allowing us to connect and deliver cargo across over 60,200 inland locations around the world.

In Ivory Coast, MSC offers logistics services to/from the main ports of the country. This market-leading infrastructure allows us to tailor our offering to your business needs.



KEY STRENGTHS

Multimodal inland transportation and handling solutions:

- Supervision of loading/unloading at the presence of an independent survey company
- Container preparation for all cargo types
- Packing and pre-stacking services
- Empty equipment availability
- Reefer pre-trip inspections, cleaning and monitoring
- Project cargo services
- Warehousing services

Dedicated forwarding departments for efficient cooperation with port authorities.

Documentation:

- Development and certification of specialized loading scheme, including dangerous goods
- Customs Clearance



DEPOT



WAREHOUSE



CUSTOMS CLEARANCE



MSC HEAD OFFICE



MSC OFFICE



TRUCK



RAIL



PORT OF CALL

SHIPPING SOLUTIONS

REEFER CARGO

[msc.com/reefer](https://www.msc.com/reefer)

MSC is a world leader in reefer cargo transportation and operates one of the youngest fleet in the world. Every year we transport over 2 million TEU of reefer cargo worldwide. Thanks to almost 50 years of experience in this field, we have developed exceptional expertise in carrying chilled and frozen cargo across the globe. From frozen fish, shrimp, and meat, fruit and vegetables, our teams' expertise and experience ensure customers' peace of mind – whatever the cargo.

We keep investing in the latest reefer technologies to ensure we offer our customers the optimal transport conditions for their perishable cargo. While reefer containers are on board our vessels or in a port, they are always plugged to a constant power source. Whilst the containers are in transit over land, MSC can provide a Genset portable diesel generator that will provide the necessary power to keep the container operating at the required temperature.

Our reefer units are available in 40ft high cube; which are controlled through an integrated microprocessor and are capable of fresh air adjustment, dehumidification, CFC-free insulation (ensuring minimum temperature loss) and cooling/heating machinery of the highest quality. In addition, our reefer containers are fitted with software

programmed to display specific alarm codes should a malfunction be detected.

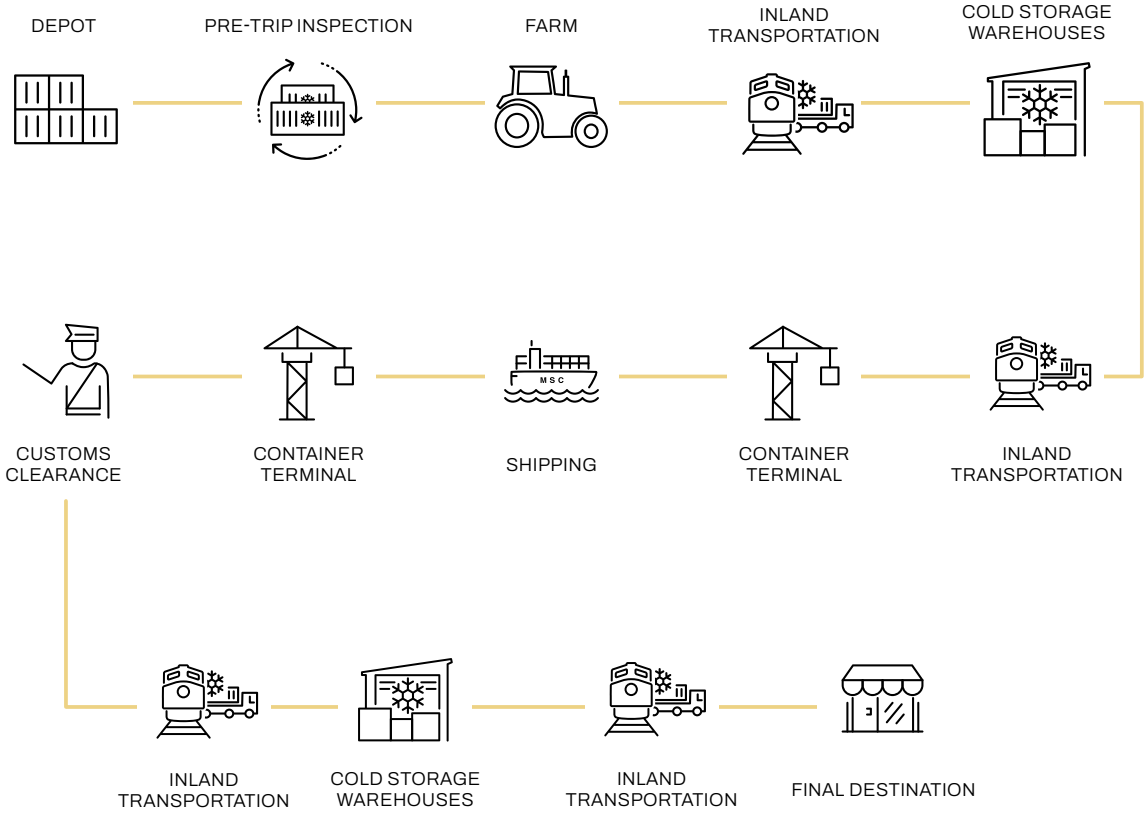
Our fully trained engineers are immediately notified and can attend to the unit directly, thus ensuring the quality of the product is not compromised. When transporting perishable cargo, MSC takes the necessary precautions to maintain the optimum conditions at all times. This helps our customers meet the relevant regulatory requirements and retaining the sale value of their cargo at destination.

KEY STRENGTHS

- Over 1,000 reefer specialists continuously trained on the latest standards and technologies
- World-leading reefer container fleet
- Average container age under 7 years
- Highly standardised control procedures
- Weekly and regular solutions to global destinations



COLD CHAIN LOGISTICS SOLUTIONS



SHIPPING SOLUTIONS

PROJECT CARGO

[msc.com/project](https://www.msc.com/project)

We recognise that transporting large, heavy cargo, requires special care and attention. MSC has the necessary knowledge, expertise and experience to transport our customers' cargo safely and efficiently. Upon receipt of your quotation request and, where available, provision of the technical drawings, we will utilise our established relationships with ports around the world to consider all operational practicalities. This would include loading, discharge and, where required, transshipment handling, including local cost implications and representation.

OUT-OF-GAUGE CARGO

Out-of-gauge is a term used to describe the height, width or length of which a cargo extends beyond the capacity of a standard container. Such cargo will be loaded and secured onto a single flat rack or open top unit. An open top (20ft or 40ft) would be utilised where the cargo length and width is 'in-gauge' but its height exceeds that of a standard container.

BREAKBULK CARGO

MSC's breakbulk service is provided for cargo that is too large or too heavy to load our vessels as out-of-gauge. Breakbulk cargo is loaded directly to the vessel and secured to multiple flat racks already positioned on board. This service requires the most meticulous care, preparation and planning from MSC's project cargo specialists.

KEY STRENGTHS

- Local experts liaising locally with the port
- Global coverage
- Loading, lashing and securing the cargo at your origin port or nearby depot
- Expert stowage planning onboard our vessels
- Stevedoring, port lashing and port storage facilities*
- Inland collection and deliveries using variety of equipment*
- Customs clearance and documentation*

*Availability differs by location

EXAMPLES OF PROJECT CARGO

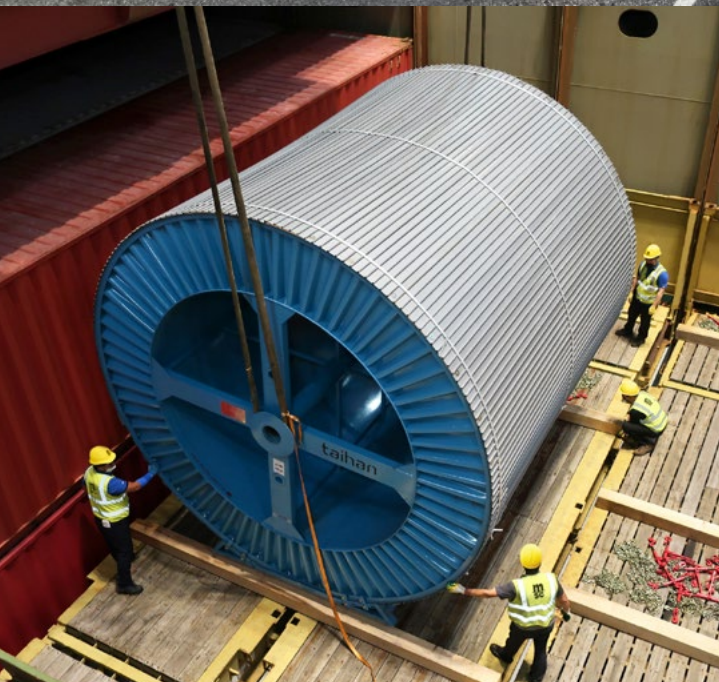
- AZIPOD (Azimuthing Podded Drive) propulsion
- Heaviest cargo: 305 tons loaded on MSC Ditte
- Longest cargo: 41 meters loaded on MSC Carolina
- 25 breakbulk packages loaded on single voyage

Special cargo received and delivered by:

- Truck
- Barge
- Direct (floating craft)

Handling options:

- Gantry
- Mobile or floating crane
- Direct and indirect port combinations offered





CONTACT DETAILS

MSC MEDITERRANEAN SHIPPING CO. (CÔTE D'IVOIRE) S.A.

As agent of MSC Mediterranean Shipping Company SA, Geneva



MSC ABIDJAN

Treichville zone Portuaire
Rue des Gallions
18 B.P. 2792
ABIDJAN 18
Ivory Coast
T: +225 27 21 756 666
E: civ-info@msc.com

MSC SAN PEDRO

RDC Batiment TSP
Zone Portuaire
01 BP 187
SAN PEDRO 01
Ivory Coast
T: +225 27 34 719 450



MOVING THE WORLD, TOGETHER.



[msc.com/ivorycoast](https://www.msc.com/ivorycoast)